

San Bernardino Valley College

Grant Development and Management
Board Presentation September 10, 2015

Dr. Kathleen M. Rowley, Director and
Dr. Susan Bangasser, Dean of Science

Grants Overview

- * 2014-2015 was a year of managing more than \$8 million in grants awarded in the past few years:
- * Ongoing federal/national grants included:
 - * HSI STEM PASS GO
 - * MSEIP
 - * National Science Foundation ATE grant
- * California Community College Chancellor's Office grants:
 - * Middle College High School grant (renewed)
 - * CTE Transitions grant (renewed)
- * Campus-based Student Mental Health program grant (completed)
- * Enrollment growth nursing (renewed).

State Projects

- * **AB86 Adult Education**

- * A regional effort involving school districts and adult schools gathered community input on adult education services and gaps. The project was awarded to the district in March 2014 for \$366,883. Ms. Emma Diaz was hired to coordinate the grant.
- * The planning period has been extended through December 2015. Implementation funding is expected in December 2015 or January 2016.

Grant Management

- * In 2014-2015, post-award management was a major focus of the SBVC Grant Development and Management department; 50%-75% of grant office staff time is spent managing awarded projects.
- * Streamlink Amplifund grant management software will help to organize grant tasks and be compliant with new (December 2014) federal regulations and processes. We began training grant office staff and grant project directors starting August 2015.

Future Opportunities

- * National Endowment for the Humanities (NEH) Dialogue on the Experiences of War. Dr. Jeffrey Demsky is applying, if awarded, will start Fall 2016.
- * HSI-STEM 2016 solicitation expected in Spring 2016; focus will be on a foundational engineering program.
- * National Science Foundation ATE grant extended through 2015-2016 will provide leverage for other NSF applications in water and nanotechnology, including IUSE grant we're applying for in November 2015.

Minority Science and Engineering Improvement Program

Student Success Supplemental Instruction (SI)

Success Rates Students in Chemistry and General Biology Classes		
<u>Population</u>	<u>5 or more SI sessions</u>	<u>< 5 SI sessions</u>
General	77%	38%
Hispanic	64%	35%
African American	63%	17%



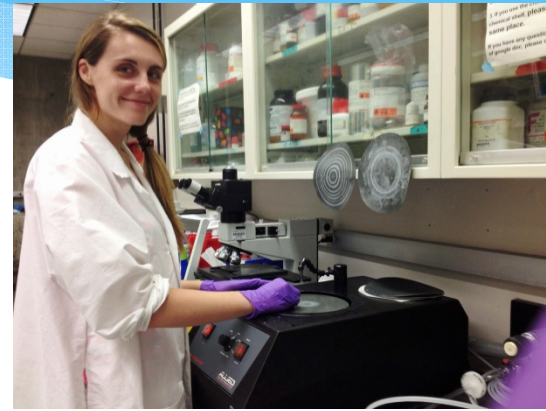
SI Leader Training

MSEIP Grant at SBVC

Increase the number of STEM Students



Learning Communities



Summer Research at UCR



Field trips: Scripps Institute and the Salk Institute



CHC Grants

September 10, 2015

Keith Wurtz, Ph.D.

Dean, institutional effectiveness, research, & planning

Crafton hills college

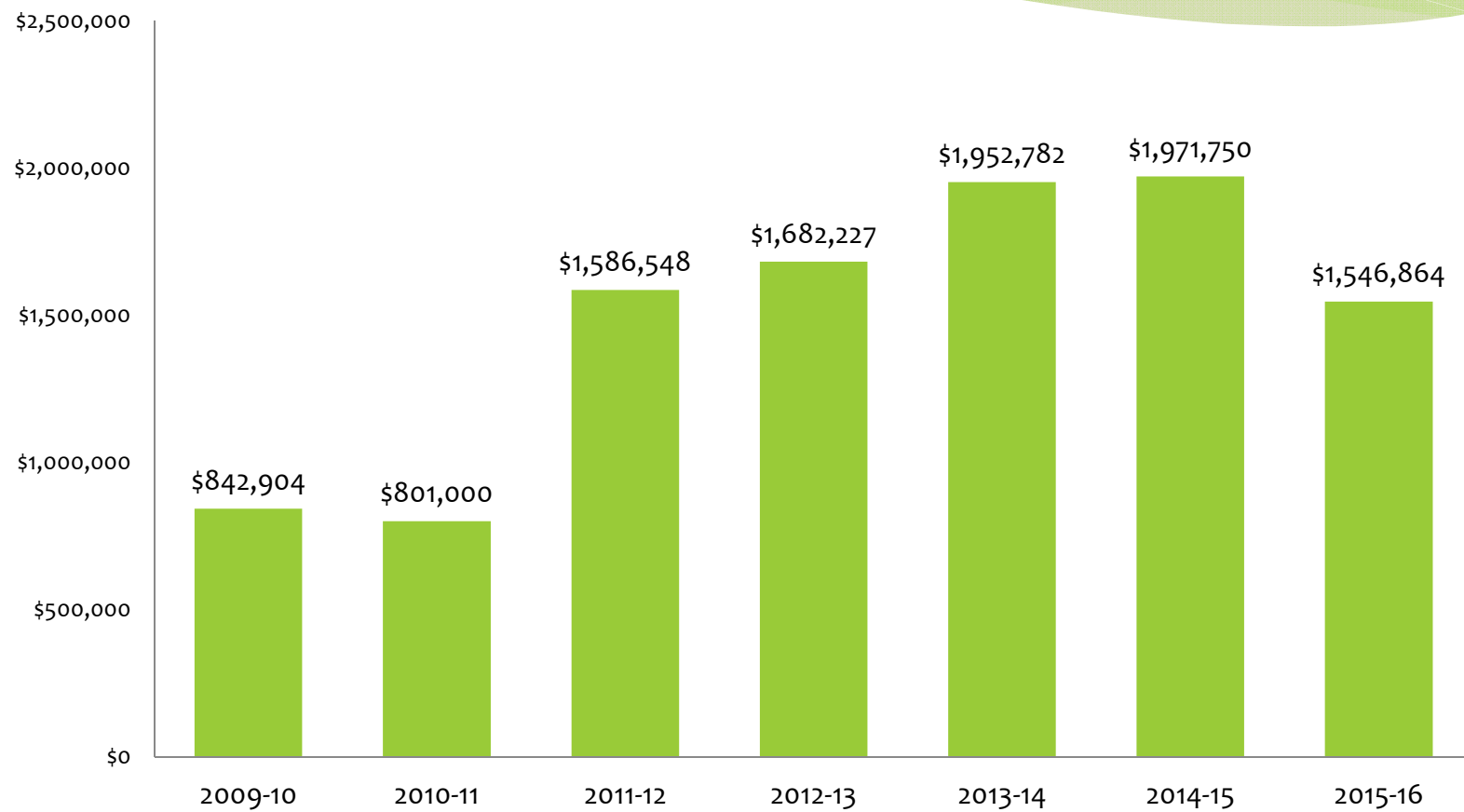
kwurtz@craftonhills.edu

909-389-3206

Grants Overview

- * 2005: Title V Coop grant with SBVC established Resource Development Office
- * 2011: Title V Individual grant established Grants Office
- * Resource Development and Grants merged in 2012
- * Resource Development and Grants separated in 2015
- * Staffing:
 - * Dean, Institutional Effectiveness, Research, and Planning
 - * Director, Grants (VACANT)

Grants Overview



Grants Management

(Tracking database)

https://informer.sbccd.cc.ca.us:1443/DashboardViewer.html?locale=en_US&embedToken=96494f34-6dco-4800-8060-c654d170df96

- * At any point in time anyone logged into the District can view Crafton's current progress on grants at the College
- * The database is updated regularly so that Crafton can track the progress on grants
 - * Awarded (Active) – grants that are currently being implemented at Crafton (n = 11)
 - * Awarded (Ended) – grants that Crafton has been awarded and have ended (n = 15)
 - * Considered and Did not Apply (n = 47)
 - * Denied (n = 38)
 - * In Process – grants Crafton is considering applying (n = 10)
 - * Pending – applied and waiting to hear whether or not grant will be funded (n = 3)

What's New on the OIERP Website?

- [2014-2015 QEI Progress \(with Disproportionate Impact\)](#)
- [CHC Fall 2014 Campus Climate Survey](#)
- [2014 Student Equity Data](#)

Quick Links

- [Current Crafton Enrollment](#) (Must be Logged-In to District Network)
- [College Snapshot](#)
- [CHC District Map](#)
- [OIERP Research Calendar](#)
- [Current Grant Applications and Awards](#)

GRANT	CHC CONTACT	Description	Current Status	GRANT PERIOD	DUE DATE	GRANT AMOUNT REQUESTED	GRANT AMOUNT AWARDED	20112012 AMOUNT	20122013 AMOUNT	20132014 AMOUNT	20142015 AMOUNT	20152016 AMOUNT
Current Status: Awarded (Active) (13 items)												
San Manuel	Karen Childers	\$125,000 from the San Manuel Band of Mission Indians to support at-risk, educationally and financially disadvantaged students with student employment and scholarships. (Due Dates for Grant Varies)	Awarded (Active)	Annual			\$414,693	\$189,693	\$100,000	\$0	\$125,000	

Future Opportunities

Grant	Total Amount	Length	Brief Description
USDE – Institute of Educational Sciences	\$3.3 million	5 years	The grant will implement and research the impact of Reading Apprenticeship. The grant includes money for training, conferences, reading apprenticeship, FIGs, and research.
San Manuel	\$200,000	1 year	\$200,000 from the San Manuel Band of Mission Indians to support at-risk, educationally and financially disadvantaged students with student employment and scholarships.
Title V – HSI STEM	\$4.3 million	5 years	STEM Success Center, Undergraduate Research, and adult learners and strategies to encourage Hispanic Students to select STEM Programs - Cohort program for adult re-entry.
Title V – Individual or COOP Pathways Grant	\$2.6 million	5 years	The purpose is to increase the college-going culture within the region through pathways to college. Strategies include outreach to K-12, some of the LLP strategies, and developing a mentor program for students.

Career and Technical Education (CTE) Grants at Crafton



- * **CTE Enhancement Fund** – 2 parts: 60% funded EMS, Respiratory, and professional development and outreach for all Crafton Allied Health Programs; 40% funded Fire and Paramedic.
- * **CTE Transitions** – Expanded awareness of CTE through high school outreach and career exploration. Funds are also being used to recruit women into the Fire Program and for over 70 outreach events annually.
- * **Perkins** – Funds used to support CIS, Child Development, Respiratory, Fire, EMT, Paramedic, and outreach.

CTE Partnership Grants at Crafton



- * **California Career Pathways Trust (CCPT) with Public Safety Academy (PSA)** - Crafton partnered with PSA Charter School to create career pathways in Fire Service.
- * Victor Valley College included Crafton in its **RAMP UP** program of CTE pathways; \$191,885 for Year 1 (2014-2015); \$191,885 for Year 2 (2015-2016).
- * **Trade Adjustment Assistance Community College and Career Training** – partner with fiscal agent Chaffey College to examine engineering and manufacturing as possible curriculum for Crafton: \$50,000 over 4 years.
- * **State of California Innovation in Higher Education** – Purpose is to align educational policy and initiatives regionally via a bi-county cradle-to-career collective impact model, increase college preparedness, and to improve career preparedness through strengthened partnership with industry to better align education with workforce development needs: \$2.5 million awarded, CSUSB is fiscal agent.

Future of grants at Crafton Hills College

- * Strategically identify and pursue grants that align with Crafton's Strategic Directions and Goals

[illegible]