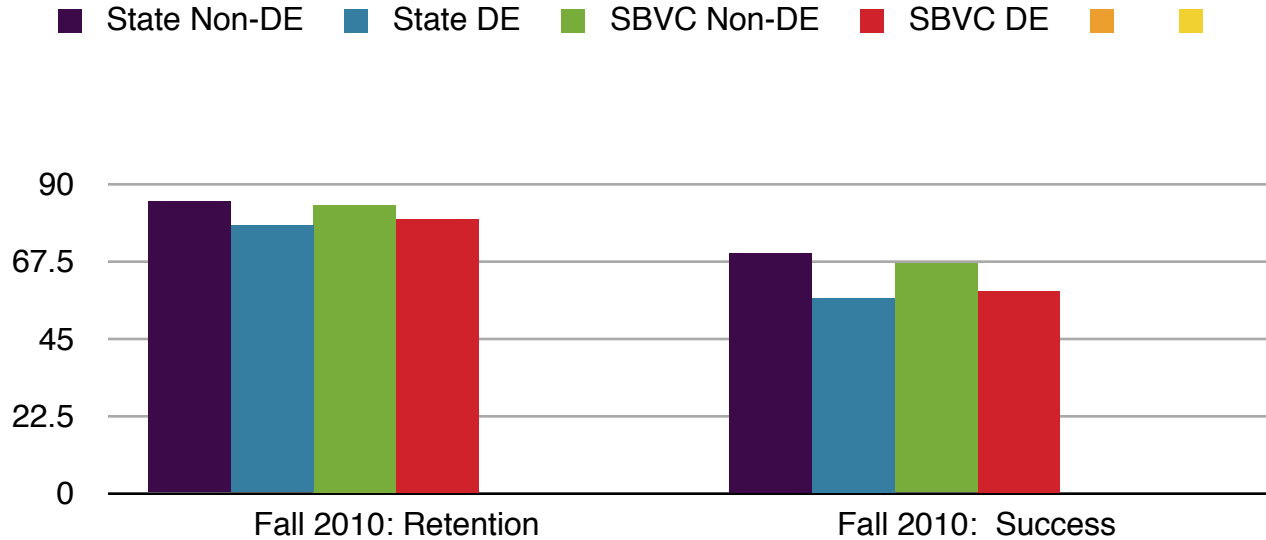


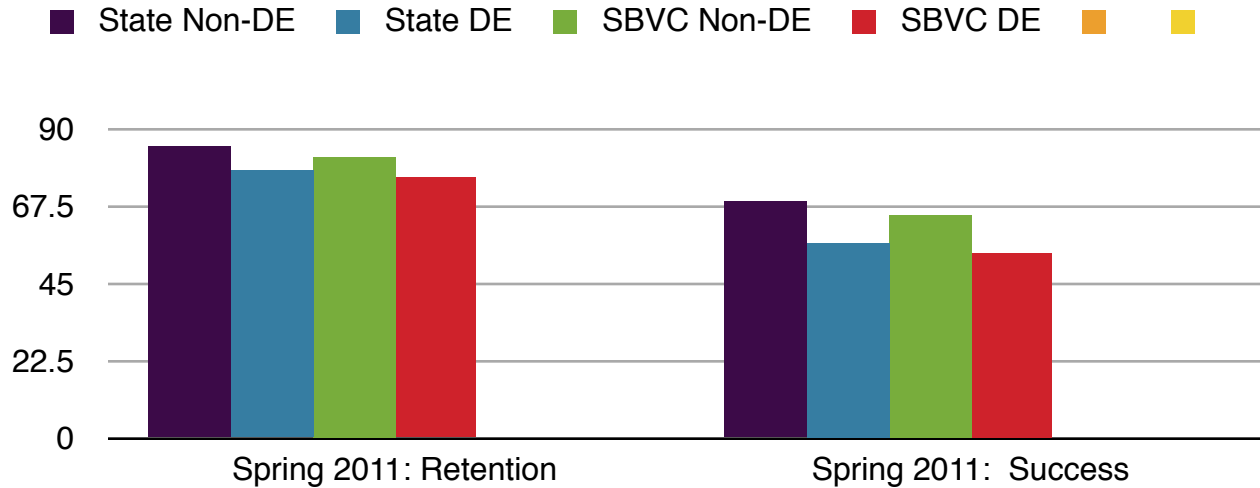
# Retention and Success Rates:

State, College  
Non-Distance Education, Distance Education



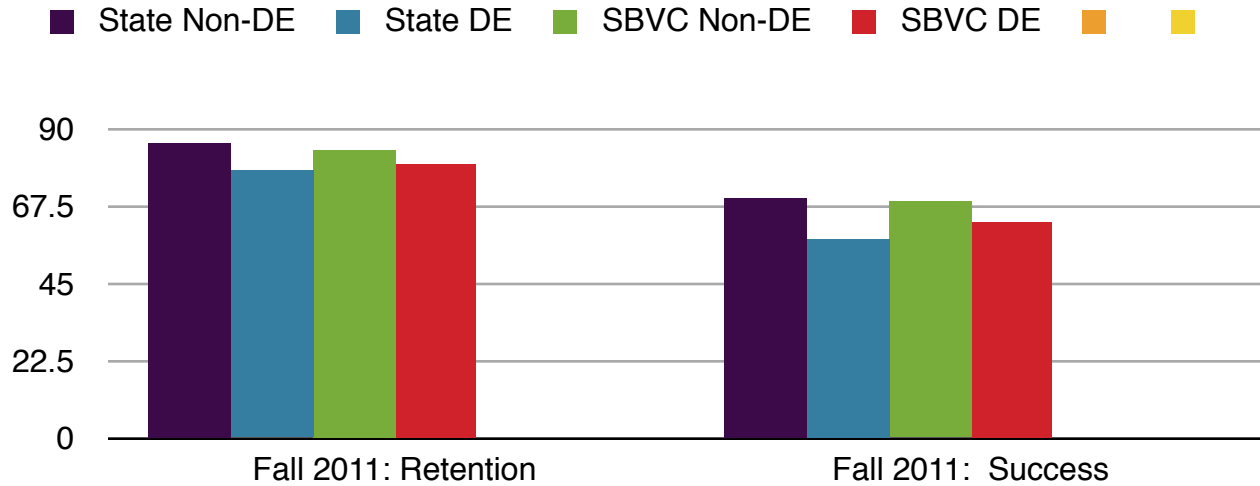
	Fall 10 R	Fall 10 S	Spring 11 R	Spring 11 S	Fall 11 R	Fall 11 S	Spring 12 R	Spring 12 S
State Non-DE	85%	70%	85%	69%	86%	70%	86%	70%
State DE	78%	57%	78%	57%	78%	58%	79%	59%
SBVC NonDE	84%	67%	82%	65%	84%	69%	85%	68%
SBVC DE	80%	59%	76%	54%	80%	63%	80%	58%

Analysis: SBVC's DE retention and success numbers closely mirror each other. However, SBVC DE success rates are higher than the state average for Fall, 2010.



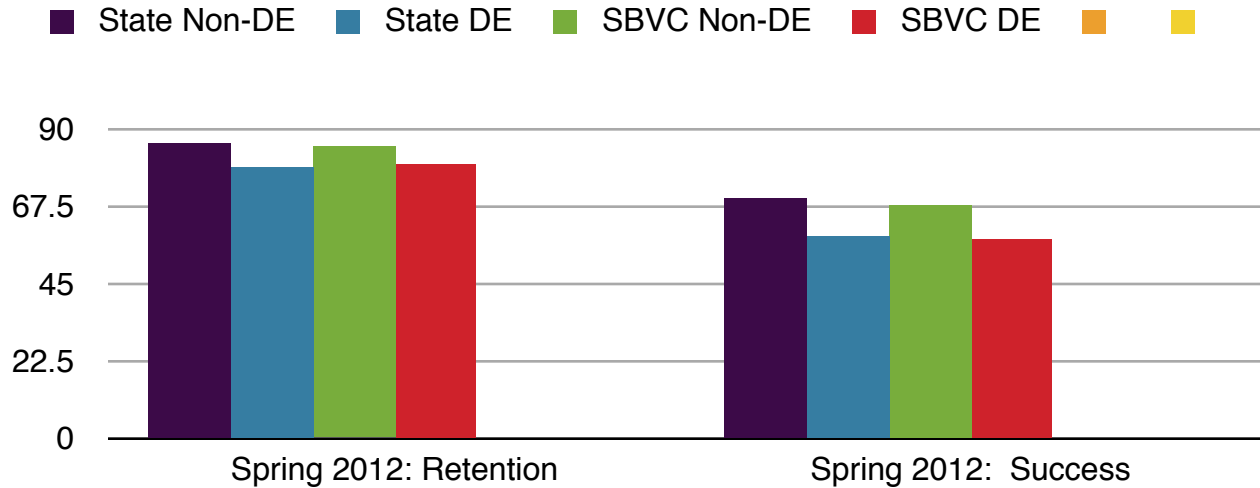
	Fall 10 R	Fall 10 S	Spring 11 R	Spring 11 S	Fall 11 R	Fall 11 S	Spring 12 R	Spring 12 S
State Non-DE	85%	70%	85%	69%	86%	70%	86%	70%
State DE	78%	57%	78%	57%	78%	58%	79%	59%
SBVC NonDE	84%	67%	82%	65%	84%	69%	85%	68%
SBVC DE	80%	59%	76%	54%	80%	63%	80%	58%

Analysis: SBVC's DE retention and success numbers closely mirror each other. However, SBVC DE success rates are lower than the state average for Fall, 2010.



	Fall 10 R	Fall 10 S	Spring 11 R	Spring 11 S	Fall 11 R	Fall 11 S	Spring 12 R	Spring 12 S
State Non-DE	85%	70%	85%	69%	86%	70%	86%	70%
State DE	78%	57%	78%	57%	78%	58%	79%	59%
SBVC NonDE	84%	67%	82%	65%	84%	69%	85%	68%
SBVC DE	80%	59%	76%	54%	80%	63%	80%	58%

Analysis: SBVC's DE retention and success numbers closely mirror each other. However, SBVC DE success rates are higher than the state average for Fall, 2011.



	Fall 10 R	Fall 10 S	Spring 11 R	Spring 11 S	Fall 11 R	Fall 11 S	Spring 12 R	Spring 12 S
State Non-DE	85%	70%	85%	69%	86%	70%	86%	70%
State DE	78%	57%	78%	57%	78%	58%	79%	59%
SBVC NonDE	84%	67%	82%	65%	84%	69%	85%	68%
SBVC DE	80%	59%	76%	54%	80%	63%	80%	58%

Analysis: SBVC's DE retention and success numbers closely mirror each other. There is no significant difference.