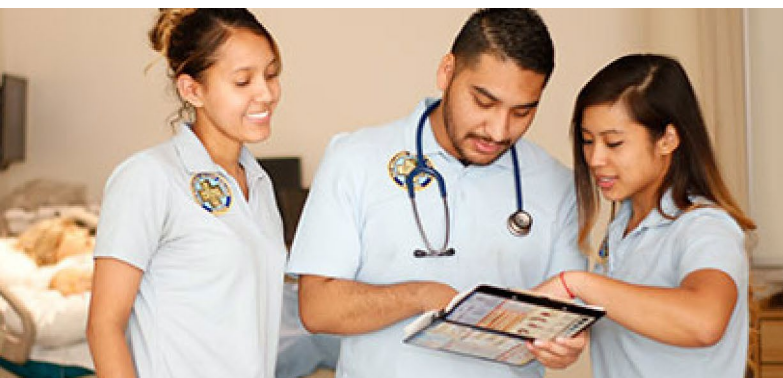


San Bernardino Valley College Associate Degree in Nursing Program Information Packet



**San Bernardino
Valley College**

701 S. Mt. Vernon Ave., San Bernardino, CA 92410
Health and Life Science Building, HLS 101
909 384 4450 | valleycollege.edu/nursing

ASSOCIATE DEGREE NURSING PROGRAM

The Nursing Department at San Bernardino Valley College offers a sequence of courses leading to an Associate of Science Degree with a major in nursing. This is achieved through two pathways—traditional ADN and LVN to RN. In addition, we offer an ADN to BSN pathway through our Concurrent Enrollment Program (CEP). Students learn to function in a variety of healthcare settings, providing safe, quality, nursing care for the purpose of maintaining the patient's optimum level of wellness. Learning activities occur on the SBVC campus and in local community healthcare agencies. Graduates are eligible to take the National Council Licensure Examination (NCLEX) to become a Registered Nurse (RN). The program has a reputation of excellence in the community and is approved by the California Board of Registered Nursing and accredited by the Accreditation Commission for Education in Nursing (ACEN).

California Board of Registered Nursing

P.O. Box 944210
Sacramento, CA 94244-2100

Accreditation Commission for Education in Nursing

3390 Peachtree Road NE, Suite 1400
Atlanta, GA 30326

It is recommended that students attend an Information Meeting or a Nursing Application Workshop to learn more about the Nursing program. A schedule of meetings and workshops will periodically become available on the Nursing Department web page. To begin academic planning for the pathway to the ADN program, meet with General Counseling or a Nursing Counselor to create an educational plan. Please contact Admissions & Records/Transcripts if you are transferring units from another college.



The nursing program is four semesters in length after completion of prerequisites. Class lectures and skills labs are scheduled Monday through Friday (daytime). Clinical Rotations vary and can be days or nights. These schedules are not always available when course registration begins. Students will be notified of clinical schedules when the clinical sites confirm rotations have been granted. Students are admitted twice a year—Fall and Spring.

As of Spring 2022, the nursing program is requiring all entering students to be fully vaccinated against COVID-19, including all eligible COVID boosters.

PATHWAY TO THE NURSING PROGRAM

Students must successfully complete courses in General Education and Science prior to applying for the program. Please consult with a counselor to determine course equivalencies.

PREREQUISITES

Required General Education Prerequisites

Complete the general education courses with a minimum G.P.A. of 3.0:

- ENGL 101 (Freshman Composition)
- MATH 108 (Statistics) or PSYCH 105 (Statistics for the Behavioral Sciences)
- COMM 100 (Elements of Public Speaking) or COMM 111 (Interpersonal Communication)
- PSYCH 100 (Introduction to Psychology)
- SOC 100 (Introduction to Sociology) or ANTHRO 102 (Cultural Anthropology)
- HUMANITIES (Choose two Humanities courses)
 - Humanities are selected from Category III of the SBVC Graduation Requirements. Humanities must be representative of 2 different disciplines and only 1 applied humanities course is accepted.
- ETHNIC STUDIES (Choose one course)
 - As of Spring 2024 application period, students will be required to have one Ethnic Studies course from Category VI of the SBVC Graduation Requirements.

Required Science Prerequisites

Complete the science courses below with a minimum G.P.A of 2.8:

- BIOL *250 & *251 (Human Anatomy and Physiology I & II)
or
- BIOL 260 & *261 (Human Anatomy & Human Physiology)
- BIOL *270 (Microbiology)

SCIENCE COURSE INFORMATION

Chemistry 101 or 105 is a prerequisite for Biology 261 and 270. When considering the prerequisite science courses, please note that Chemistry 105 or Chemistry 101 is required for students who participate in concurrent enrollment or who are planning to transfer to the CSU system. Both Human Anatomy and Physiology I & II series (Biology 250 and 251) must be completed at the same institution. Human Anatomy and Human Physiology (Biology 260 and 261) does not need to be completed at the same institution. Please consult a counselor regarding course equivalency if you are considering taking a science course or series at another college or university.

REPEAT POLICY

The nursing department will only allow two (2) repeats of any of the three prerequisite science courses (Anatomy, Physiology, and Microbiology). A repeat occurs when a student has already received a grade, which includes A, B, C, D, F, and W, for a course and takes the course for a second time. Excused Withdrawals (EW) do not count as a repeat. The repeat policy will apply to science courses taken at institutions, including SBVC courses. If one of the science prerequisites expires (taken more than 5 years ago) the repeat policy does not apply to that course. Please seek advice from a counselor if you are considering taking courses at another institution, including Crafton Hills College.

ONLINE AND ACCELERATED SCIENCES

The nursing program is currently not accepting any science courses with online labs. The only exception is for courses completed between Spring 2020 and Fall 2021. The SBVC Nursing Program does not accept science prerequisites from Azusa Pacific University (APU), Los Angeles Pacific University, the Integrated Health Science Program at the Southern California University of Health Sciences located in Whittier, CA. nor from any other private, non-profit, unaccredited, trade or career college or university.

DANTES FUNDED CLEP AND CREDIT BY EXAM

The nursing program does not accept any form of Exams for College Credit scores to suffice any of the prerequisites.

BACHELOR'S DEGREE OR HIGHER HOLDERS

If a student possesses a bachelor's degree or higher from a U.S. regionally accredited institution, the only general education courses that will be counted for points and GPA are:

- ENGL 101 (Freshman Composition)
- MATH 108 (Statistics) or PSYCH 105 (Statistics for the Behavioral Sciences)
- COMM 100 (Elements of Public Speaking) or COMM 111 (Interpersonal Communication)
- PSYCH 100 (Introduction to Psychology)
- SOC 100 (Introduction to Sociology) or ANTHRO 102 (Cultural Anthropology)
- ETHNIC STUDIES as of the Spring 2024 application period

If a student graduated from a college or university that did not require either of the above 6 courses, they will need to complete them.



EVALUATION OF PRIOR CREDIT - TRANSCRIPT EVALUATION

This section only applies to students who have attended colleges or universities other than SBVC.

Other college transcripts, including Crafton Hills College, should **not** be submitted to the Nursing Department. All official transcripts must be submitted to the Admissions & Records Office (AD/SS-100) or online, for evaluation **BEFORE** a nursing application is submitted.

- 1 Submit official transcripts of previous college(s) to the Admissions office.
- 2 Email Address: sbvcadmissions@valleycollege.edu
Students are responsible for verifying receipt of transcripts by the Admissions & Records Office prior to submitting the Request of Prior College Credits form.
- 3 Submit Request of Prior College Credits to SBVC Admissions & Records Office to receive an official evaluation of units taken at other institutions.
- 4 Obtain a copy of the evaluation, which will be sent to the students' SBVC email account.

EVALUATION OF PRIOR COLLEGE CREDIT TIMELINE		
Dates to Submit Request to Admissions & Records	Nursing Application Available Dates	Start Term
January 3 through February 28 (Dates are subject to change)	Spring (March 15 – March 30)	Fall
July 1 through August 30 (Dates are subject to change)	Fall (September 15 – September 30)	Spring

Please visit https://www.valleycollege.edu/admissions-records/records/transcript_evaluations.php for any timeline changes regarding evaluations of prior credit. Nursing applications that do not contain a completed Evaluation of College Credits Earned from an Admissions & Records evaluator will be denied. Please be sure to allow plenty of time for evaluation to be completed. No exceptions will be made for students who did not submit a request for evaluation within the timeframes listed above. Please double check your courses to see that they have been evaluated and are accepted. Look for an (*) on sciences. If an (*) appears, you must see the “notes” area on your Evaluation for an explanation.

APPLICATION TO THE NURSING PROGRAM

This section only applies to students who have attended colleges or universities other than SBVC.

APPLICATION PROCESS

- 1** Apply to SBVC. All students must be active in the registration system.
- 2** Submit official High School/GED transcripts showing completion to Admission & Records. There are no exceptions and no substitution for High School/GED transcripts. This includes international secondary completion.
- 3** Completion of all required prerequisite courses. Final grades must be posted prior to applying.
- 4** All prerequisite courses completed outside of SBVC, including Crafton Hills College, require an Evaluation of Prior College Credit.
- 5** Apply to SBVC Nursing program during the online application periods. The online application link will not be available outside of the dates listed below.

Nursing Application Available Dates	Start Term
Spring (March 15 – March 30)	Fall
Fall (September 15 – September 30)	Spring

- 6** Applicants will be notified of their application status approximately 8 weeks after the closing application date. Due to the high volume of inquiries, please do not contact the nursing program regarding your application until the review period is complete.

The nursing program currently accepts no more than 55 students per academic semester.

For Spring Entry:

- 45 Associate Degree (ADN)
- 10 LVN to RN advanced placement

For Fall Entry:

- 25 ADN students
- 20 Concurrent Enrollment (CEP)/ADN to BSN students
- 10 LVN to RN advanced placement students

Applicant selection for the SBVC Nursing Program consists of two phases of the multi-criteria point system. The first phase is the sum of points from categories 1-7. The second phase is the ATI TEAS test, which is by invitation only. The ATI TEAS test is an assessment test that includes basic English, Math, Science and Reading. Students with the highest total points from phase one will be invited to take the TEAS test or to submit TEAS score (taken within 1 year). Applicants must request the official ATI TEAS Transcript be sent directly from [atitesting.com](https://www.atitesting.com) to SBVC_Nursing@valleycollege.edu. Once points from phase one and two have been combined, final applicant selections will be made. There is no waitlist. Applicants are either “accepted” or “denied”. If denied, students are welcome to reapply. If selected as an alternate, and not admitted, students may apply for the following application period.

For more information about preparing to take the ATI TEAS assessment exam visit <https://www.atitesting.com/teas-prep>

TIPS FOR TEAS SUCCESS

Identification: Test-takers are required to bring valid identification, such as a driver's license or passport, to the testing center on the day of the exam. No one will be admitted to the test if they do not have their ID or if their ID does not meet the following requirements:

- Government-Issued
- Current Photograph
- Legal Name
- Examinee's Signature
- Permanent Address

Please note: a credit card photo, temporary license, or student ID do not meet these criteria.

Exam Content: The TEAS exam covers various subjects, including reading, math, science, and English/language usage. Candidates should familiarize themselves with the content and format of the exam using study materials provided by ATI. The SBVC STEM MESA center provides TEAS workshops. Please visit our website for details. For more information about preparing to take the ATI TEAS assessment exam visit <https://www.atitesting.com/teas-prep>

Time Limit: The test is timed, and candidates usually have a specific amount of time to complete each section. Time limits for each section can vary depending on the version of the TEAS exam.

Scoring: The exam is scored based on the number of correct answers, and the scores are used by institutions as part of their admissions process. Students must receive 62 % or higher to be considered for admission into the SBVC Nursing program.

Testing Environment: Candidates are expected to adhere to the rules and regulations of the testing center. This includes following guidelines related to behavior, use of electronic devices, and maintaining test security. The proctor will read the instructions before the exam begins.

Special Accommodations: ATI TEAS accommodate candidates with disabilities or special needs. Candidates seeking accommodation must submit a request along with appropriate documentation within a specified timeframe as instructed on the TEAS testing invitation email.

ADVANCED PLACEMENT APPLICANTS - LVN TO RN

Advance placement applicants must follow the same application process as described above. Applicants for the LVN to RN program will not be competing with the Generic ADN applicants. Advanced placement applicants will be considered for admission using a pool exclusively for LVN to RN students. Ten (10) LVN to RN students are admitted every semester. LVN to RN students receive credit for Nursing Fundamentals course (NURS 150) and will be enrolled in the transitional Vocational to Professional Nurse course (NURS 140).

Advancement Placement students in NURS 140 will be given the opportunity to challenge the first and second semester nursing courses consisting of NURS 151, NURS 160, and NURS 161. A student's final placement into either first, second, or third semester of the nursing program will be dependent on passing the required challenge exams for first and second semester. LVN to RN applicants are strongly encouraged to meet with a counselor to explore program requirements and options.

ADVANCED PLACEMENT LVN TO RN REQUIREMENTS

LVN applicants must have at least 1 year of full-time or 2 years of part-time employment as a LVN, prior to applying. A detailed resume and signed letter of verification from the employer will be required. An active LVN license (in good standing), social security or tax ID number, are all required to apply.

LAUNCH/PROVIDENCE APPRENTICESHIP

Applicants will not be evaluated using the multi-criteria point system. These applicants will still be required to complete all program prerequisites and application steps.

30 UNIT OPTION

The LVN 30 Unit Option does not award an entering LVN an Associate of Science (AS) degree. Individuals who become licensed as Registered Nurses using this option may not be eligible for licensure in states other than California. They may have difficulty applying to a college/university for an advanced degree. Licensed Vocational Nurses seeking the 30 Unit Option may make an appointment with a Nursing Counselor or the Associate Dean of Health Science, Nursing Director, to discuss the courses and pathway required. Please see the course outline below.

30 Units Option Course Outline:

REQUIRED CONTENT	Course Number	Course Title	Units T = Theory C = Clinical
NURSING			
Advanced Medical-Surgical	NURS 161 NURS 251	Beginning Med/Surg Nursing Intermediate Med/Surg Nursing	5 U (T 2.5, C 2.5) 5 U (T 2.5, C 2.5)
Psych/Mental Health	NURS 260	Mental Health Nursing	4 U (T 2, C 2)
Geriatrics		Integrated in all courses	
Management/Leadership	NURS 261	Complex Care and Leadership	5 U (T 2.5, C 2.5)

Required for Advanced placement students *	NURS 140	Vocational to Professional Nurse	2 U (T1, C1)
BASIC SCIENCES			
Physiology	Biol 261	Human Physiology	4 units
Microbiology	Biol 270	Microbiology	5 units
TOTAL UNITS			30 units

MILITARY CHALLENGE/ADVANCE PLACEMENT

Currently enrolled students who have had a minimum of one year active duty military service will receive three (3) units of credit toward CSU GE-Breadth Area E and Associate Degree: Option #2 requirements for Category V: Lifelong Learning and Self-Development. To obtain this credit, students need to provide a copy of their DD-214 (Service 2 or Member 4) or other official evidence of U.S. military service while on active duty. A Petition for Military Service Credit may be obtained from the Admissions and Records Office (AD/SS 100).

Students who completed coursework at other accredited colleges or universities while using veteran benefits, must submit official transcripts to the Admissions and Records Office, and request an official evaluation within two (2) semesters. To obtain credit for military coursework, students must provide a copy of their AARTS (Army/American Council on Education Registry Transcript System) or SMART (Sailor-Marine American Council on Education Registry Transcript System) Transcript. The American Council on Education makes recommendations for college credit directly on the AARTS or SMART Transcript. It is advisable to meet with a counselor to determine if the military coursework will apply toward the selected degree major and/or general education requirements. If a determination is made to award credit towards a major, then a Modification of Major form needs to be completed by the appropriate department chair. The Credit for Military Training or DANTES form is available from the Articulation Officer located in the Counseling Center, AD/SS 103.

ELIGIBILITY FOR LICENSURE OF APPLICANTS WITH MILITARY EDUCATION & EXPERIENCE

Individuals who present with relevant military education and experience equal to but not limited to Basic Medical Technician Corpsman (Navy HM or Air Force BMTCP), Army Health Care Specialist (68W Army Medic or Air Force Independent Duty Medical Technician (IMDT 4NOXIC) are eligible for advanced placement into the second semester of the SBVC Nursing Program with military documentation of education and experience. Information regarding evaluation and granting equivalency credit is available on SBVC Nursing website. It is advised to schedule an appointment with a nursing counselor.

EVALUATION OF FOREIGN TRANSCRIPTS

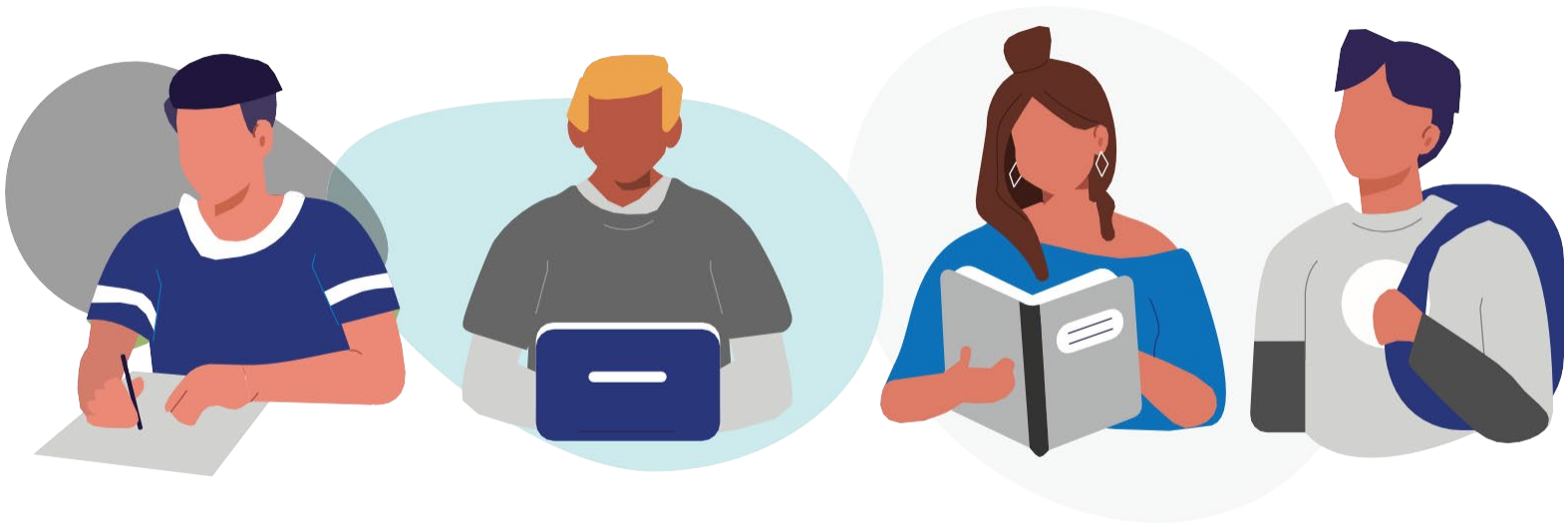
Students who have completed coursework internationally must have their high school and college transcripts evaluated by a recognized international transcript evaluation agency (AERC or IERF). The evaluation received from these agencies must show the letter grade received for each course and distinguish between the lower and upper divisions. Questions about the evaluation process may be located online or Counseling Office, AD/SS 103.

GRADUATES INTERNATIONAL NURSING PROGRAMS SEEKING CALIFORNIA LICENSURE

Graduates from nursing programs outside the United States seeking licensure in California may be admitted to specific nursing courses upon the recommendation of the California Board of Registered Nursing, as space is available. Applicants must complete an application with the California Board of Registered Nursing to receive their letter of requirements. Applicants must contact a California Board approved nursing program, speak with the director of the nursing program to discuss if there is space available in the courses required. Applicants will only be admitted if space is available in theory and clinical.

TRANSFERRING FROM ANOTHER NURSING PROGRAM

Students who attended another accredited nursing program and wish to transfer must apply and meet all program prerequisite requirements. Acceptance is not guaranteed, and applicants will be considered as space is available. Transfer students must submit an application, official transcripts, a letter of recommendation from the nursing director of the program previously attended, and course syllabi of courses completed at the other nursing school. The SBVC Nursing Admissions Committee will assess the coursework to determine if credits can be transferred or courses challenged. Not all credits may be transferable due to differences in curriculum or accreditation. Applicants will only be admitted if space is available in theory and clinical.



WHAT TO EXPECT AFTER THE ACCEPTANCE

After acceptance into the nursing program, you must complete the following requirements:

Background Check	COVID-19 Vaccine and COVID Booster	Personal Medical Insurance
10 Panel Drug Screening	TDAP, MMR, HEP B, Varicella, Tuberculosis Screening, and Influenza	Student Nurse Malpractice Insurance
A Health Clearance Which Includes a Physical Exam	American Heart Association CPR Certification	Valid Auto Insurance

Please be advised that a background check is a part of the California Board of Registered Nursing pre-licensure application. If you have questions about criminal history or prior convictions, please review the Applicant Enforcement Webinar listed on California Board of Registered Nursing web page.

EXPENSE

The fees below are approximations and designed to give students an estimate of costs.

PRE-ENTRANCE	FIRST SEMESTER	SECOND SEMESTER
Health Exam & Immunizations (depending on insurance and provider) \$50 to \$200	Tuition and Fees (CA Residents) \$400 to \$500	Tuition and Fees (CA Residents) \$400 to \$500
Apparel and Supplies \$700 to \$900	ATI Resources \$300 to \$400	ATI Resources \$300 to \$400
Books - Published & E-Book \$500 to \$800	Parking permit: \$30.00	Parking permit: \$30.00
Malpractice Insurance (HPSO only) \$27		
Castle Branch – Background Check \$113		
American Heart Association CPR Certification \$50 to \$80		
THIRD SEMESTER	FOURTH SEMESTER	COST
Tuition and Fees (CA Residents) \$400 to \$500	Tuition and Fees (CA Residents) \$400 to \$500	Total Estimated Cost \$6000
ATI Resources \$300 to \$400	ATI Resources \$300 to \$400	
Parking permit: \$30.00	Parking permit \$30.00	
Books - Published & E-Book \$500 to \$800	CA BRN • Application fee: \$300 • Live Scan Fingerprinting: \$49 • NCLEX-RN Registration Fee: \$200	
Malpractice Insurance \$27	Pinning Ceremony • Nursing School Pin \$30 - \$80 • Pictures (Optional) \$30 - \$40	

SBVC ADN MULTI-CRITERIA POINT SYSTEM

CRITERIA		MAXIMUM POINTS	POINT DISTRIBUTION
1	Academic degrees or diplomas, or relevant certificates held by an applicant	6 Points Maximum	BS/BA degree or higher 5 pts License in allied health profession..... 4 pts Certificate in allied health profession..... 2 pts All licenses and certificates must be current to receive points.
2	Grade Point Average in relevant course work <i>A maximum of two repeats in science courses are allowed.</i> <i>Refer to the Repeat Policy in the Information Packet.</i>	45 Points Maximum	Science GPA • 4.00 – 3.60..... 30 points • 3.59 – 3.00..... 20 points • 2.99 – 2.80..... 10 points Minimum of 2.80 GPA in Anatomy, Physiology and Microbiology. General Education GPA • 4.00 – 3.75..... 15 points • 3.74 – 3.50..... 10 points • 3.49 – 3.00..... 5 points Minimum of 3.00 GPA in all remaining general education courses required for application.
3	Life experience or special circumstances	4 Points Maximum for any one criteria	Life experience or special circumstances of an applicant, including, but not necessarily limited to the following: a. Disabilities b. Low Family Income c. First generation to attend college d. Need to work e. Disadvantages, social or educational environment f. Difficult personal and family situations or circumstances g. Refugee
4	Veteran	4 Points	Attach documentation (DD214) to the application. Honorable discharge required.
5	12 units taken within San Bernardino Community College District	4 Points	Reviewed with transcripts

SBVC ADN MULTI-CRITERIA POINT SYSTEM

CRITERIA		MAXIMUM POINTS	POINT DISTRIBUTION
6	<p>Documented proficiency or advanced level of course work in languages other than English.</p> <p><i>Example: Spanish 103, Spanish 157, American sign language III or ASL Certificate</i></p>	2 Points	<p>Ability to communicate in a health care setting in a language in addition to English, including but not limited to:</p> <ul style="list-style-type: none"> • American Sign Language • Arabic • Chinese (<i>including various dialects</i>) • Farsi • Russian • Spanish • Tagalog • The various languages of the Indian subcontinent and Southeast Asia.
7	<p>Successful completion of the following additional courses:</p> <p>CIT 144 Medical Terminology (2)</p> <p>PHT 062 Pharmacology I (2)</p> <p>PHT 064 Pharmacy Calculations (2)</p>	5 Points Maximum	<p>Each course completed with a passing grade of “C” or better will receive 2 points each</p> <p>Maximum points are 5 points</p>

PHASE I TOTAL POINTS WITHOUT TEAS _____ / 70 MAX
THE HIGHEST SCORING STUDENTS WILL BE INVITED TO TAKE THE TEAS

8	<p>Assessment/readiness test result (TEAS)</p> <p>Please provide an official report of your initial results when requested by SBVC admissions committee.</p> <p>Students must receive 62% or above on the ATI TEAS test to gain admission into the nursing program.</p>	30 Points Maximum	<p>Composite score on first attempt of Test of Essential Academic Skills (TEAS)</p> <p>90 – 100%..... 30 points</p> <p>80 – 89%..... 15 points</p> <p>70 – 79%..... 10 points</p> <p>62 – 69%..... 5 points</p> <p>< 62% 0 points</p>
---	---	-------------------	--

PHASE 2 TOTAL POINTS WITH TEAS _____ 100 MAX