



# Fall 2023 Newsletter

## Volume 2 - Issue 1

### Division of Research, Planning, and Institutional Effectiveness

Our mission is to provide leadership for continuous improvement by coordinating the college's planning processes, offering support for the professional development of employees, and providing data to support decision-making.

## Table of Contents

- Fun Facts for Fall 2023** ..... Page 2
- AB 705 and AB 1705 Updates** ..... Page 2
- Fall 2022 Student Transfers** ..... Page 3
- Summer 2023 Analysis** ..... Page 3
- Contact Us** ..... Page 3

## What We Do



Data



Grants



Surveys



Professional Development



Accountability

*And so much more!*



**Visit Our Website**



**Submit a Research Request**



**Intent to Apply for a Grant Form**

## What's New

### Data Coaches

Do you value data-informed decision making? Do you enjoy talking about data with others? If so, fill out the [Data Coaching Program Interest Form](#)! Starting in spring 2024, we will have a multi-week program to train the first group of Data Coaches here at Valley.

### Detailed Demographics Dashboard

We've created a dashboard to view the most detailed race/ethnicity provided to us by students, including races/ethnicities such as Japanese, Ethiopian, Cherokee, and many more! This dashboard is only available to SBVC employees with prior access. To request access, please reach out to [sbvcresearch@valleycollege.edu](mailto:sbvcresearch@valleycollege.edu).



# Fun Facts for Fall 2023

**Enrollment is Up**  
 10.5% for Headcount and 16.6% for Seat Count from Fall 2022 to Fall 2023

**75% Enrolled Online**  
 Three-Quarters of Students Are Enrolled in At Least One Online Course

**18 & 19 Years Old**  
 Are the Most Common Ages of Our Students (9.5% each)

**73% Part-Time**  
 Where Part-Time is Defined as Less Than 12 Units

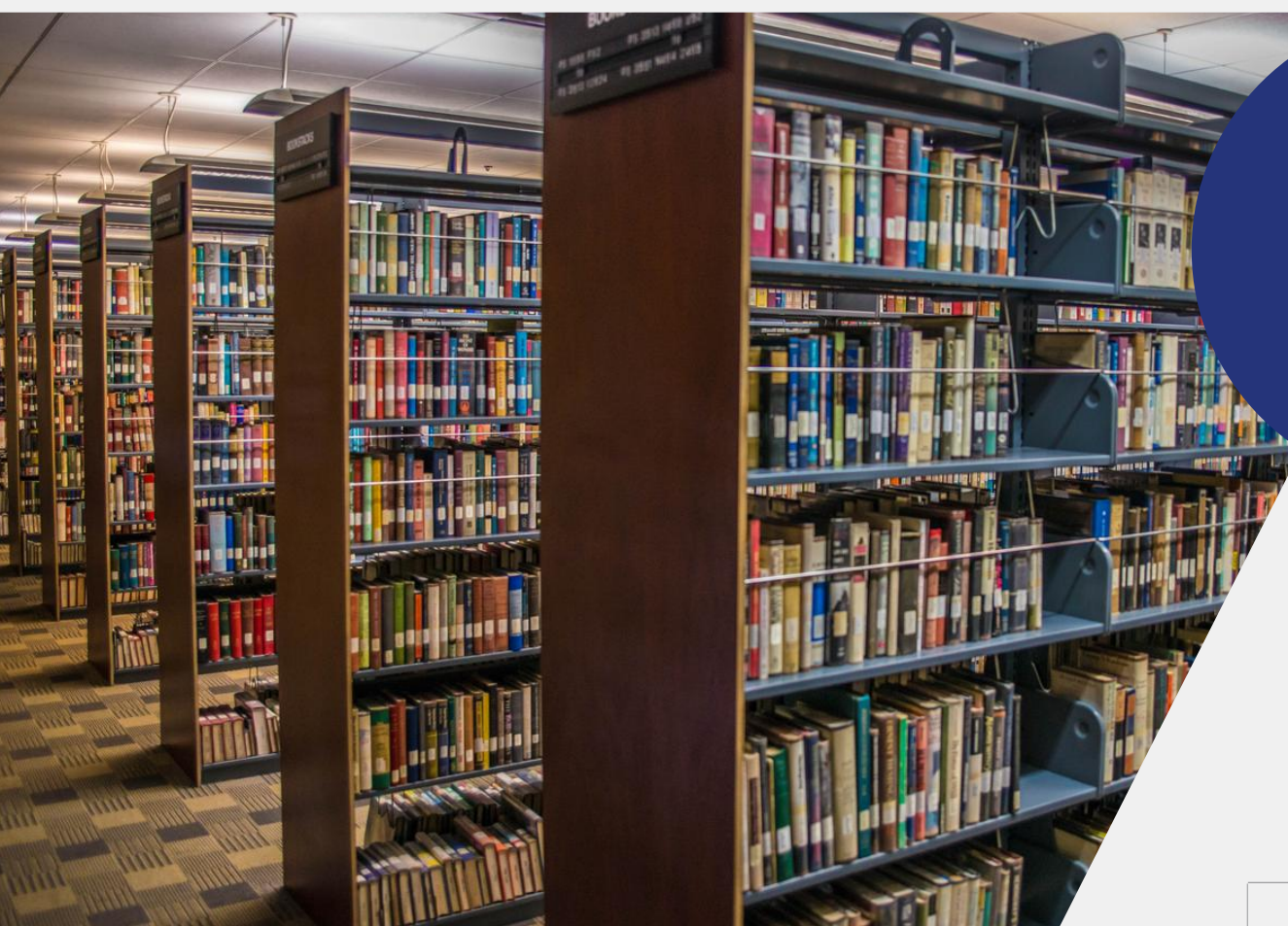
**27% New Students**  
 Over 3,200 Students Enrolled for the First Time

**60% Persisted**  
 From Spring 2023 to Fall 2023

**59% First-Generation**  
 The Majority of Students are First-Generation

**1,353 Miles**  
 Is the Greatest Distance Between SBVC and its Students

data as of 8/29/2023

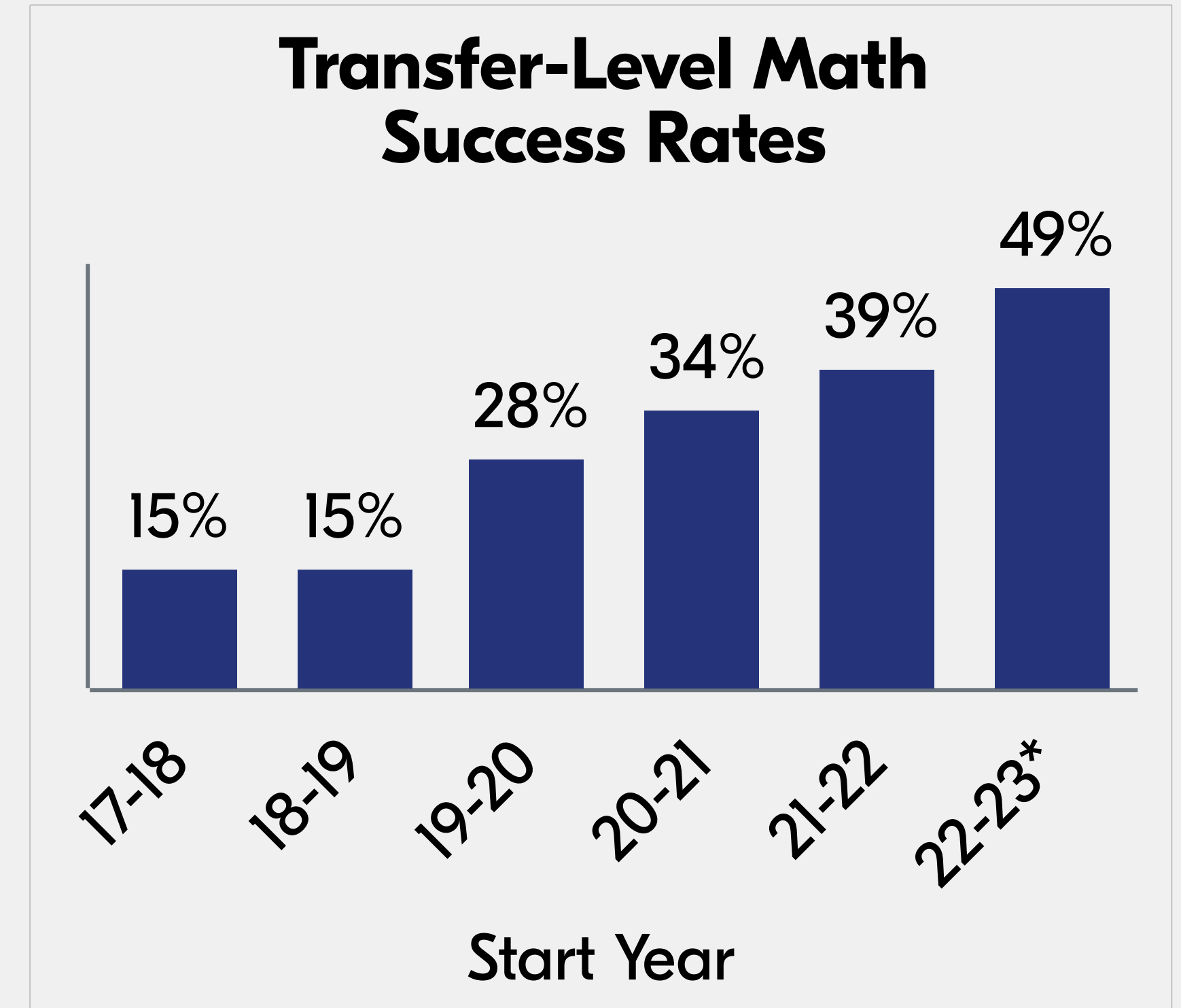
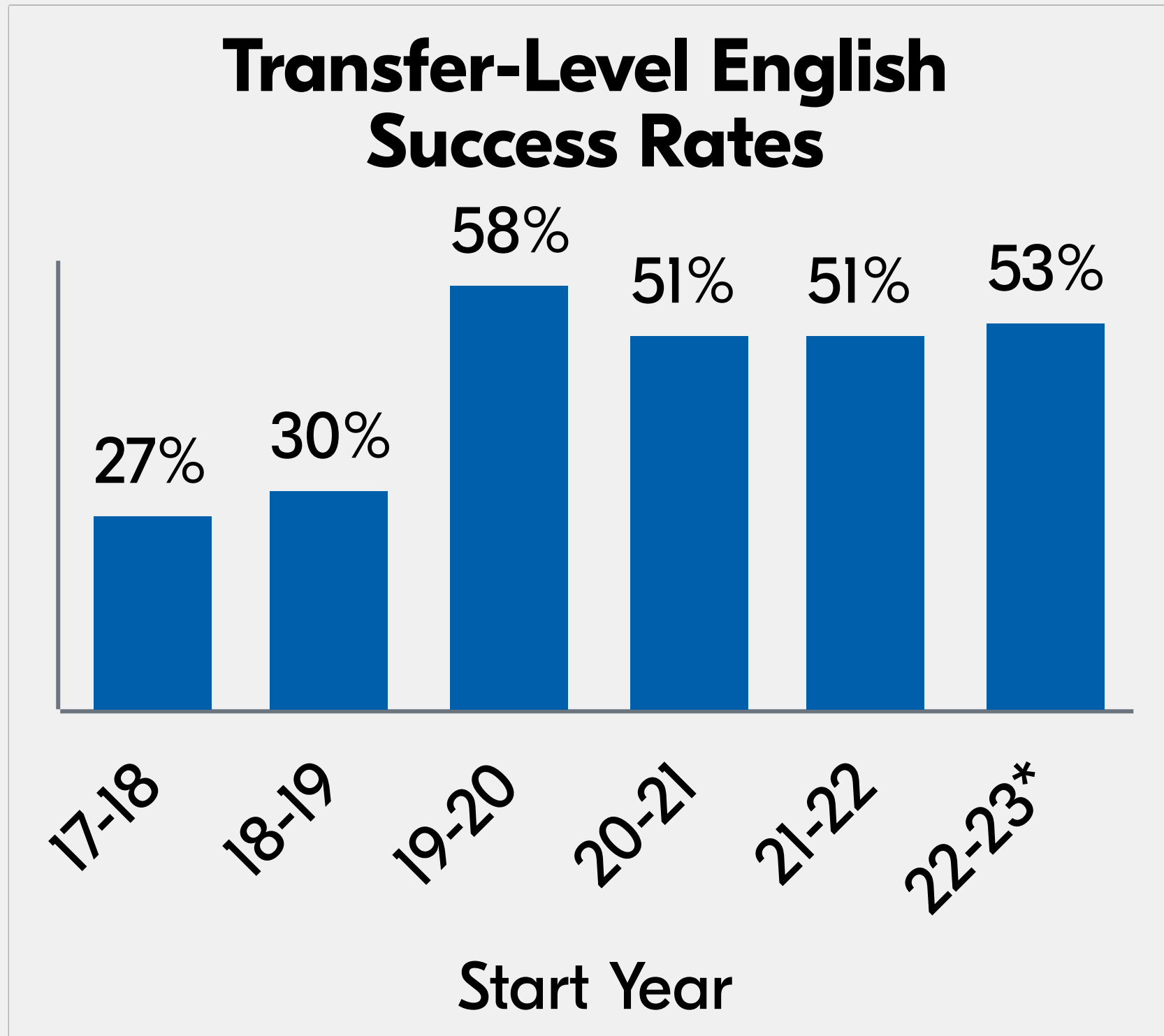


## AB 705 and AB 1705 Updates

Since the implementation of AB 705, transfer-level completion rates for both math and English have increased. This increase has been observed across all races; however, the gaps still remain.

### What Is AB 705?

AB 705 requires community colleges to place students into math and English courses that maximize the probability that they complete transfer-level courses within one year.

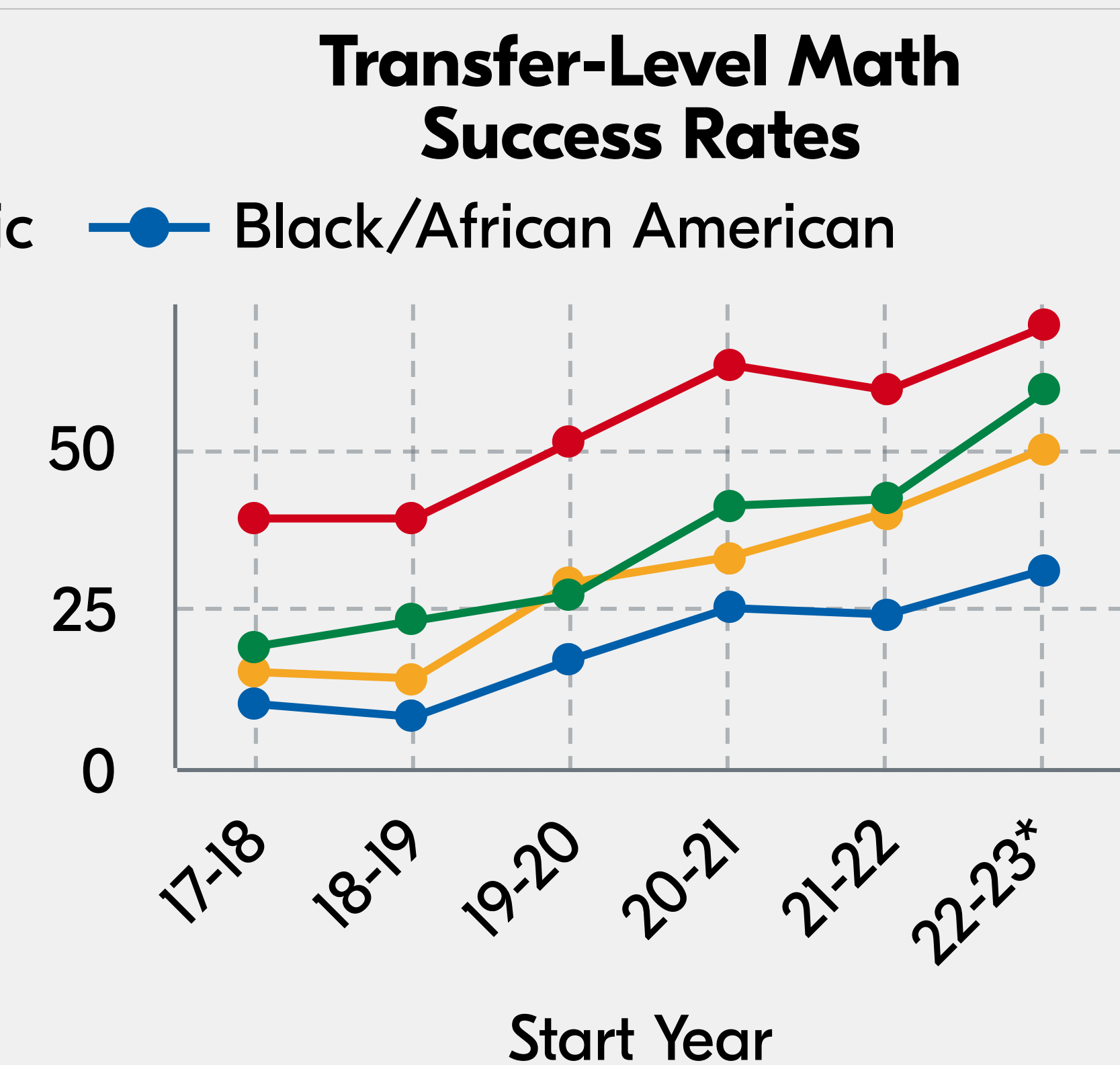
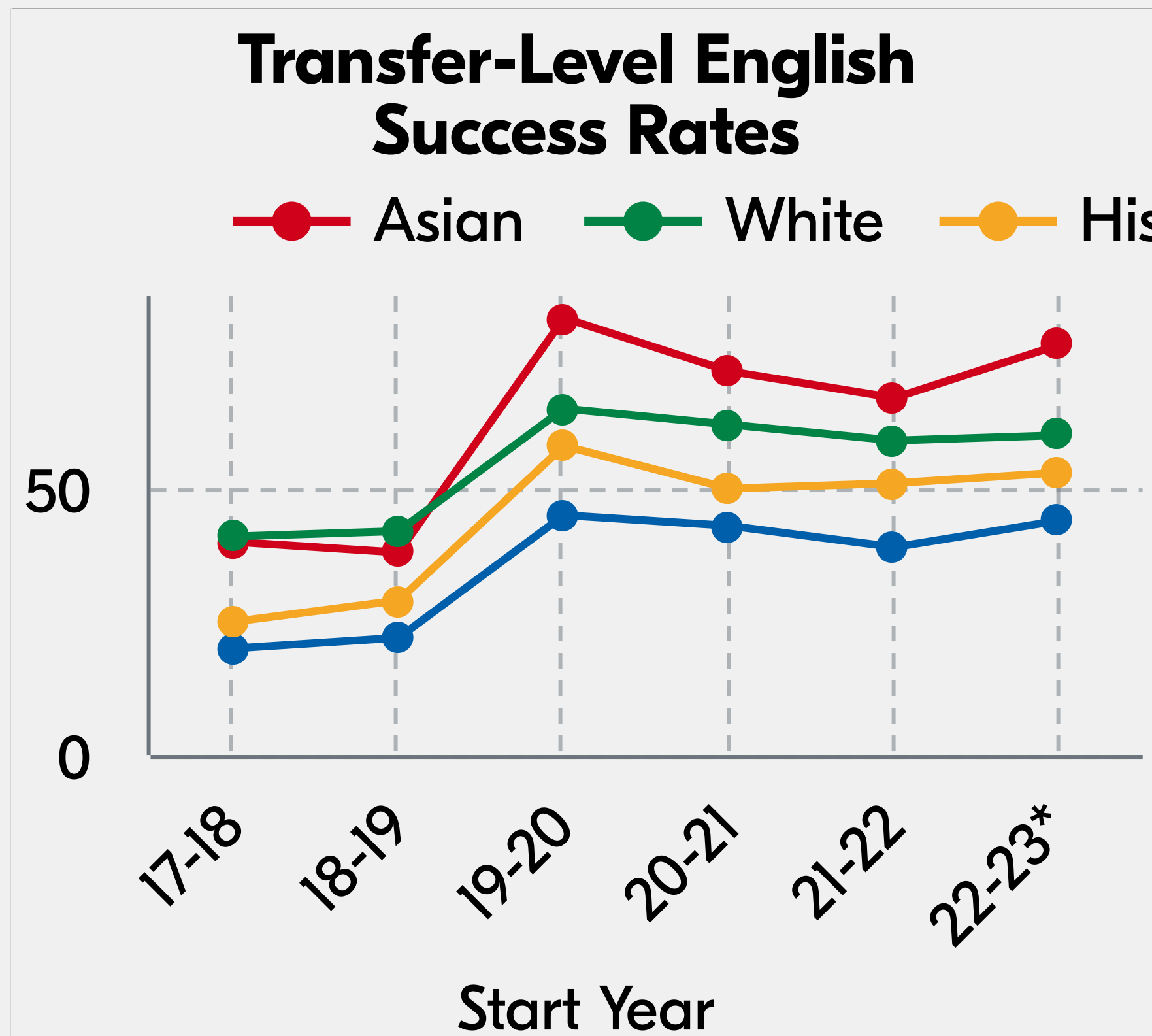


### What Is AB 1705?

AB 1705 specifies that community colleges must place students into transfer-level courses required for their academic program.

[Click for more information](#)

\*Only students that started in summer 2022 or fall 2022 are included.

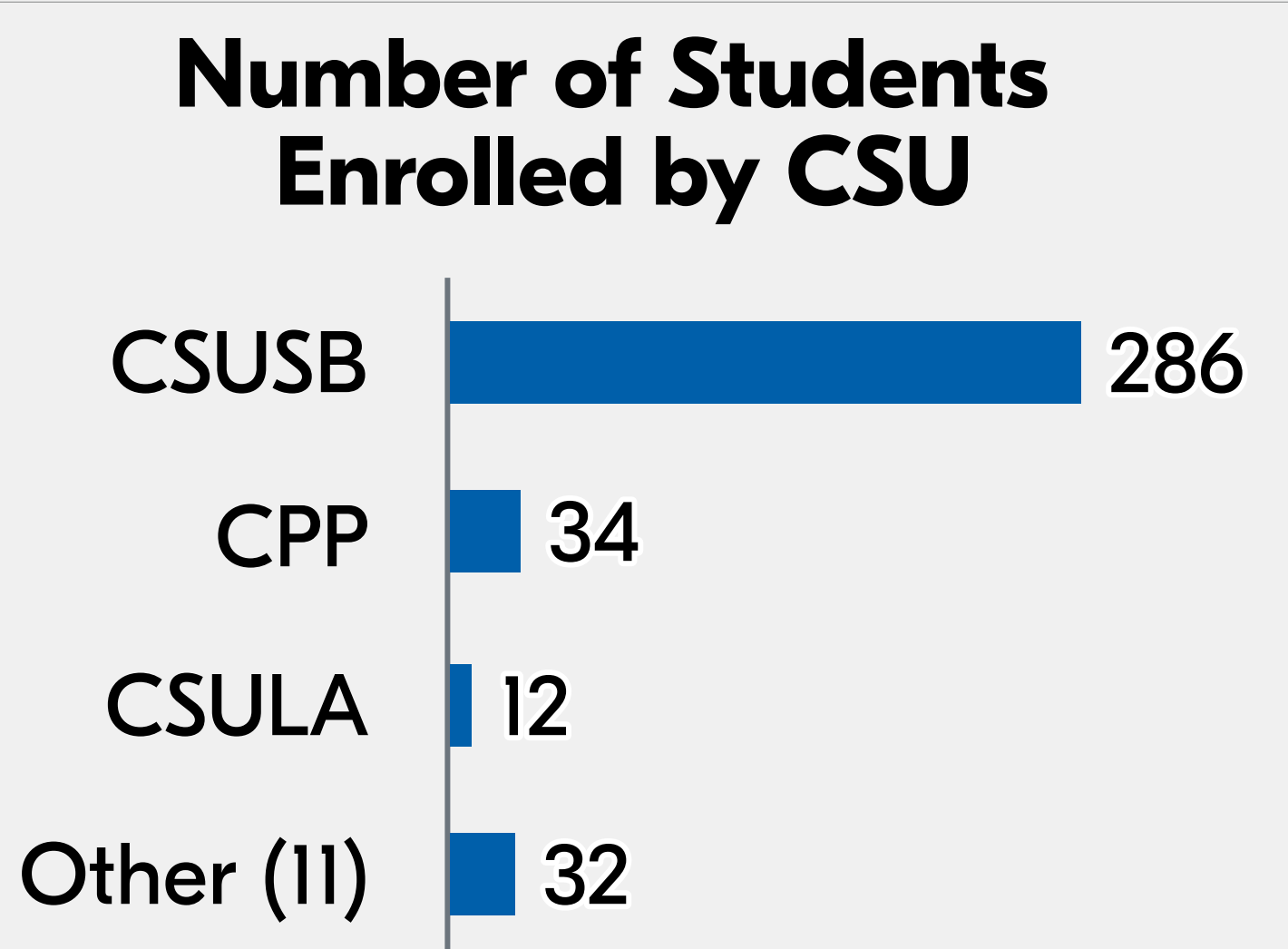




# Fall 2022 Student Transfers

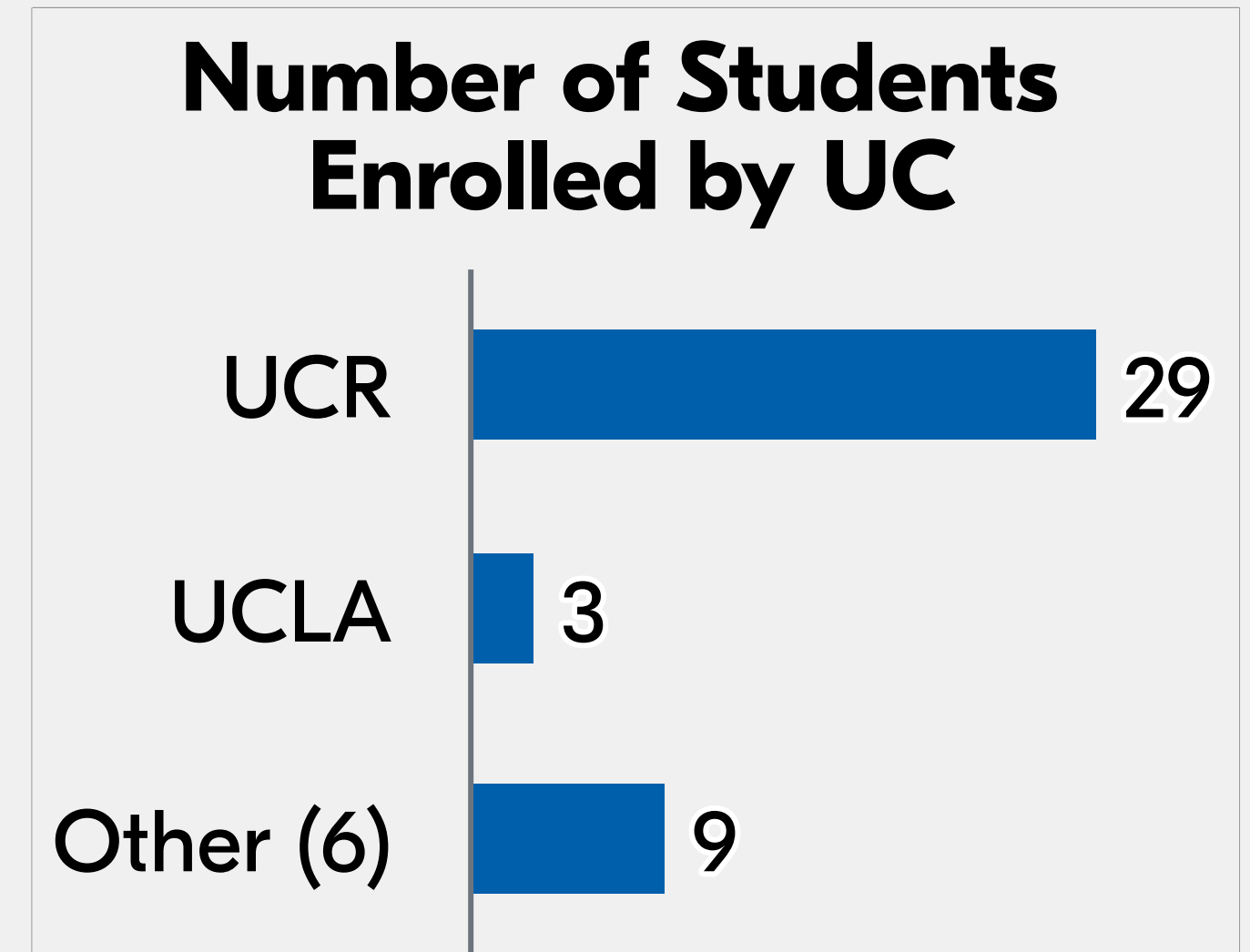
## CSU Transfers

**649** Applied  
**587** Admitted  
**364** Enrolled



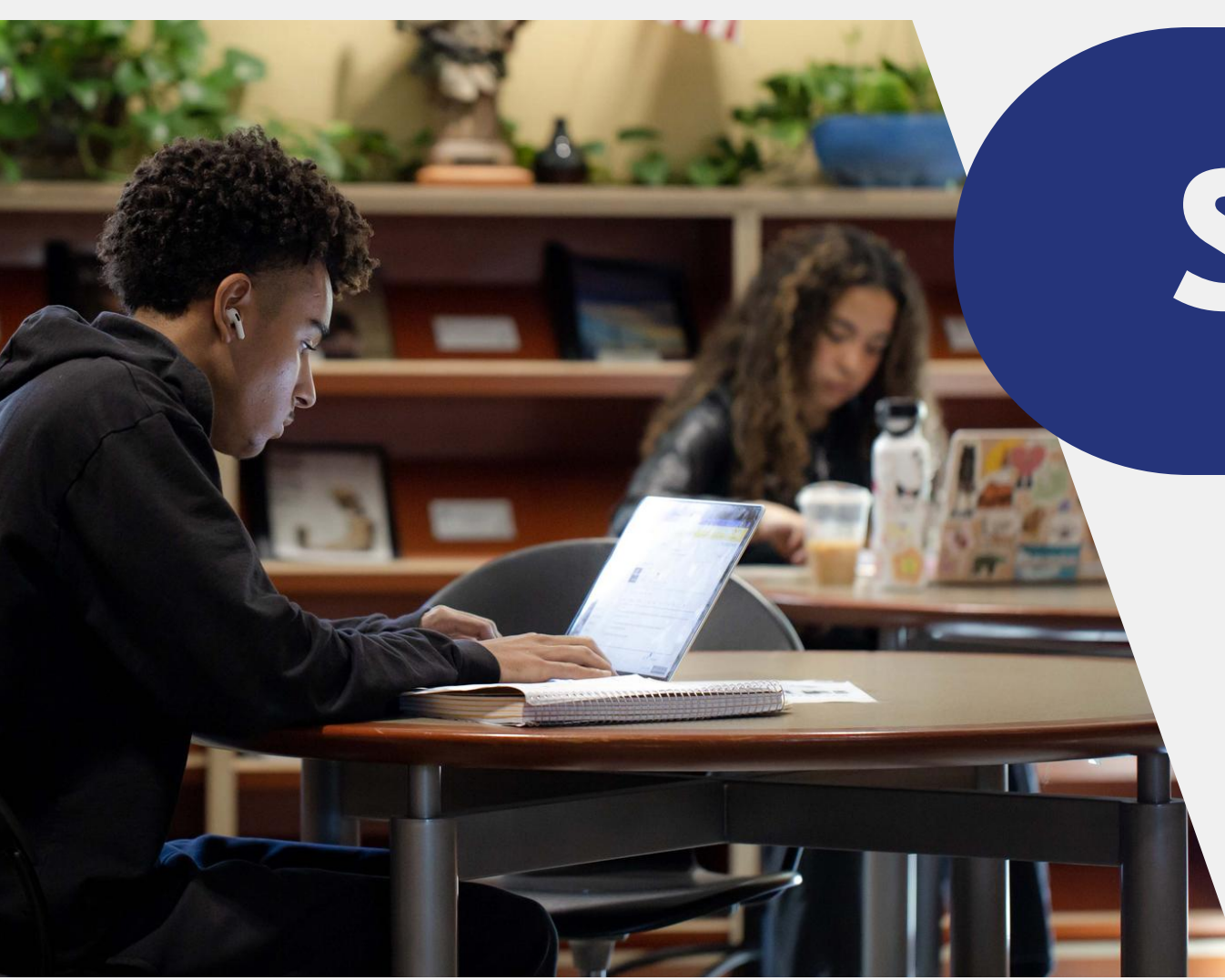
## UC Transfers

**114** Applied  
**63** Admitted  
**41** Enrolled



Source: [CSU Dashboards](#)

Source: [UC Dashboards](#)



# Summer 2023 Analysis

**7,437**  
**Students Enrolled**

**64%**  
**Fill Rate**

Valley offered free books and tuition during the summer 2023 term.

This is the highest summer enrollment in over 10 years.

This is a 5 percentage point increase from summer 2021 and summer 2022.

The following may not be a result of the free books and tuition, but it is a possible explanation.



Source: [SBVC Dashboards](#)

## Contact Us

**Dr. Joanna Oxendine**  
 Dean with Grants Oversight  
[joxendine@valleycollege.edu](mailto:joxendine@valleycollege.edu)

**Christie Gabriel-Millette**  
 Sr. Research & Planning Analyst  
[cgabriel@valleycollege.edu](mailto:cgabriel@valleycollege.edu)

**Rania Hamdy**  
 POD Coordinator  
[rhamdy@valleycollege.edu](mailto:rhamdy@valleycollege.edu)



**Shyla Cobbett**  
 Administrative Assistant  
[scobbett@valleycollege.edu](mailto:scobbett@valleycollege.edu)

**Samantha Homier**  
 Research Analyst  
[shomier@valleycollege.edu](mailto:shomier@valleycollege.edu)

**Girija Raghavan**  
 Accountant  
[graghava@valleycollege.edu](mailto:graghava@valleycollege.edu)

**Vinnie Wu**  
 Research Analyst  
[vwu@valleycollege.edu](mailto:vwu@valleycollege.edu)

**Alicia Christopher**  
 P/T Project Assistant 3  
[achristopher@valleycollege.edu](mailto:achristopher@valleycollege.edu)