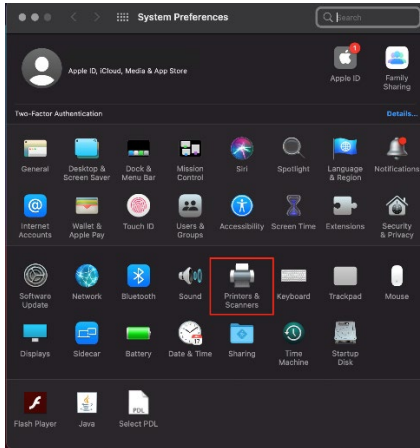


Adding a copier to a Mac

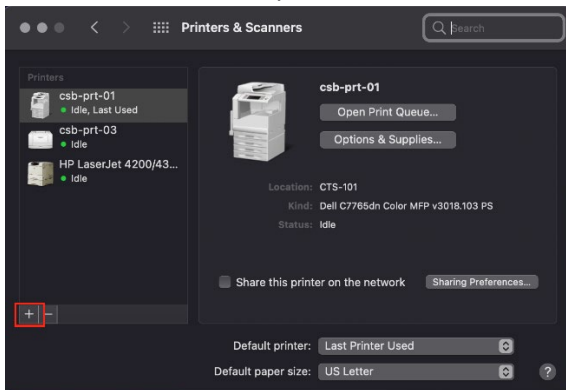
Black/white model (BMFC) - Kyocera TASKalfa 4003i KX

Color model (CMFC) - Kyocera TASKalfa 4053ci KX

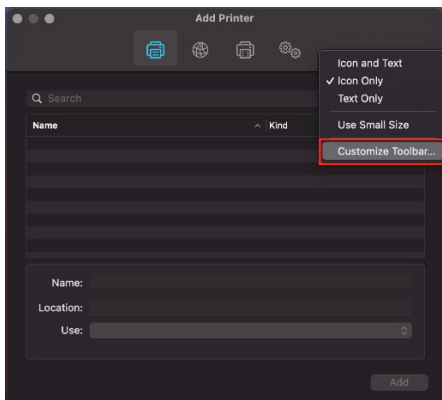
1. Open Mac system preferences and click on Printers & Scanners.



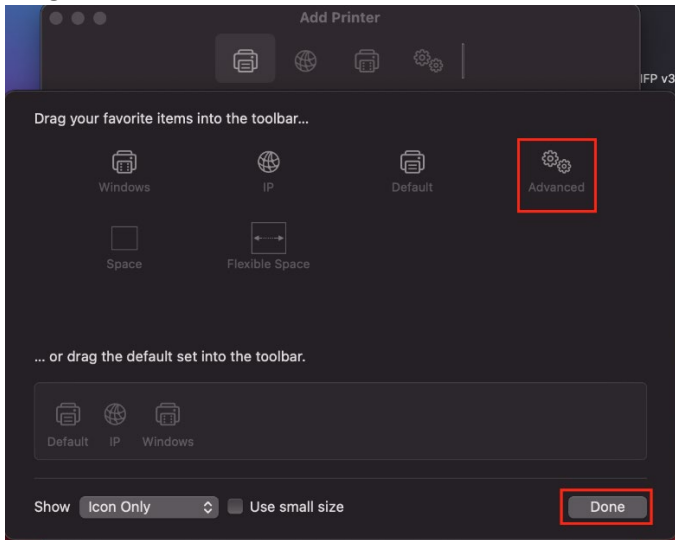
2. Click on the + to add a printer.



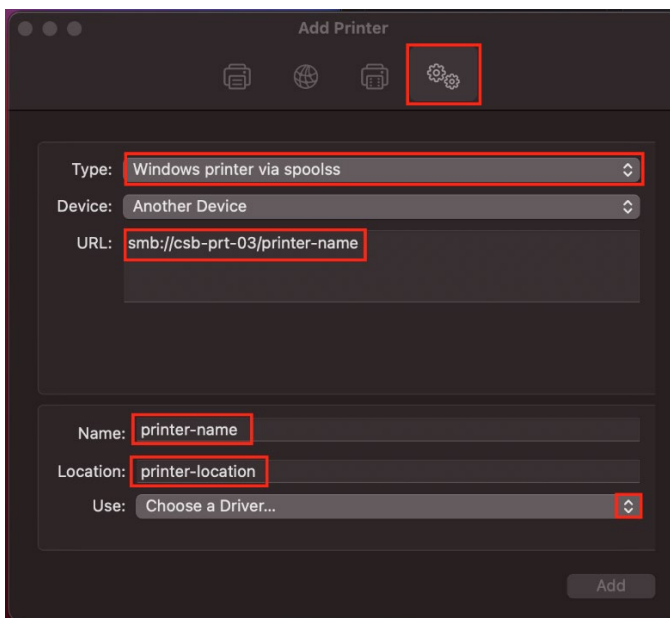
3. Right click on the toolbar and select Customize Toolbar. Skip to step 5 if Advanced is already on the toolbar.



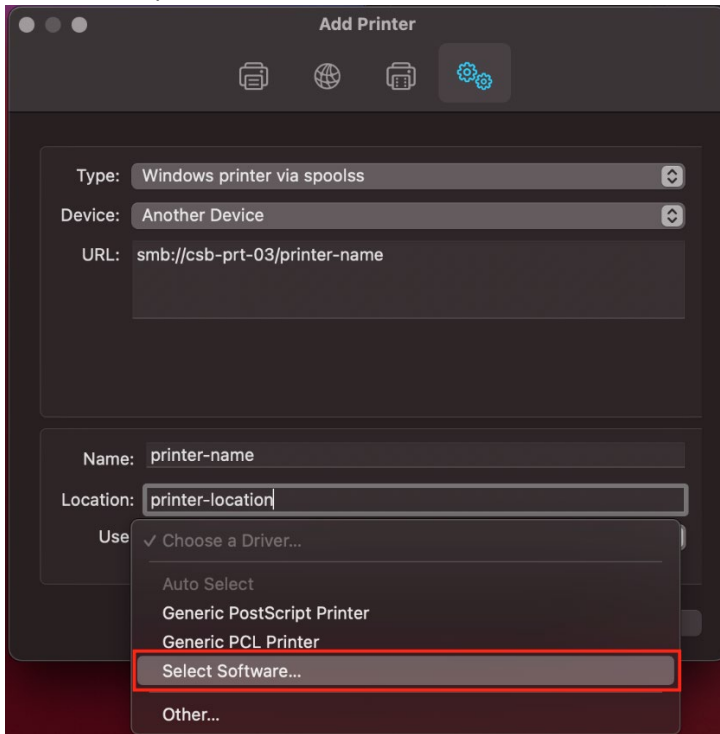
4. Drag the Advanced button to the toolbar, then click Done.



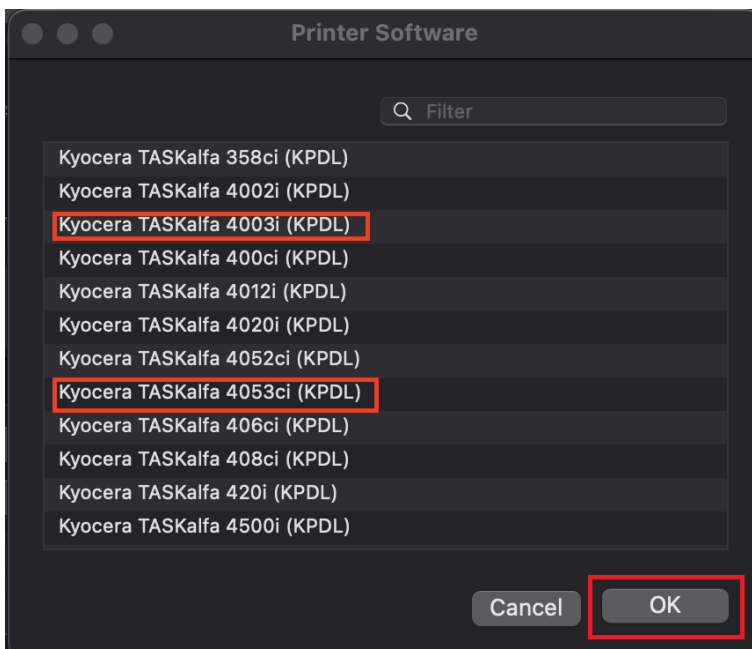
5. Click on Advanced.
 - a. It may take a minute for the options to load.
6. Fill in the info for the printer.
 - a. Select Windows Printer via Spools in the Type dropdown.
 - b. Enter the network path to printer after the smb:// in the URL box.
 - i. The network path will be csb-prt-03/printer-name
 - ii. Printer-name is the building/room number followed by the printer type.
 - iii. Printer type is BMFC for black/white copiers and CMFC for color copiers.
 - iv. Example network path: csb-prt-03/HLS201-BMFC
 - c. Enter a name for the printer, this is usually the same as printer-name from the network path. Example: HLS201-BMFC
 - d. Enter a location for the printer, usually the room the printer is located in. Example: HLS201



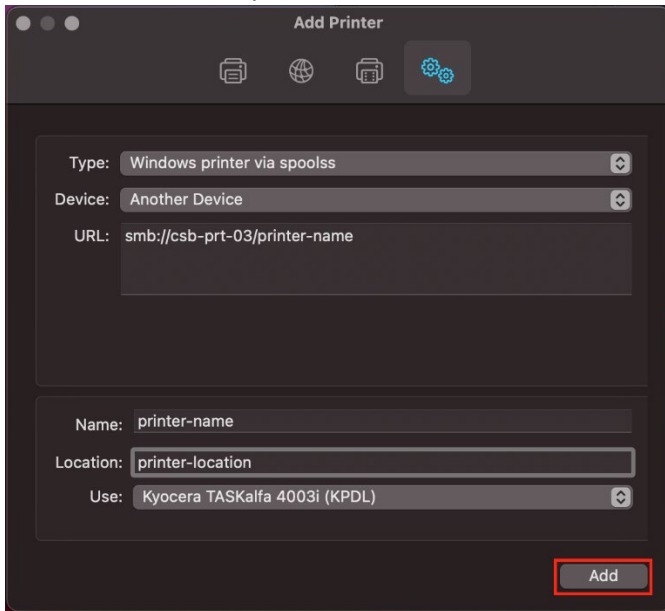
7. Click the dropdown for Use and then click on Select Software.



8. Select the correct driver from list then click Ok.
 - a. For the BMFC copiers select Kyocera TASKalfa 4003i (KPD).
 - b. For the CMFC copiers select Kyocera TASKalfa 4053ci (KPD).
 - c. If the drivers do not show in the list, the latest driver package can be downloaded from Kyocera.
 - i. [Kyocera Driver Download](#). Download the Mac Print Driver and install to get the latest drivers.



9. Click Add to add the printer.



10. Wait for the Setting up 'Printer-name...' screen to appear. When it does, set the following options. Then click Ok.

- a. Paper feeders set to Cassettes 3, 4.
- b. Document finisher set to 1000-sheet finisher.

