

SHARED GOVERNANCE MODELS

Why Change?

- Create 'umbrella' committee space where committees with common interests can have discussion
 - Closes gaps in communication & create path to 'report up'
- Short term projects and initiatives can be addressed by the appropriate 'umbrella' committee
- Realign committee meeting times for efficiency and reduce the number of overlapping meetings.

Support and Review Process

- Presented to Academic Senate for feedback
- Presented to College Council for feedback
- Model One supported by College Council on 11/8/2023

SHARED GOVERNANCE MODELS

Details

- Meeting day/time changes will begin Fall 24
- Why now? Meeting day/time changes need to be agreed upon before faculty can complete the 24/25-26/27 committee assignments, and complete the SBVC Governance Handbook
- Creation or review of committee charges and membership will begin immediately after meeting pattern is approved.

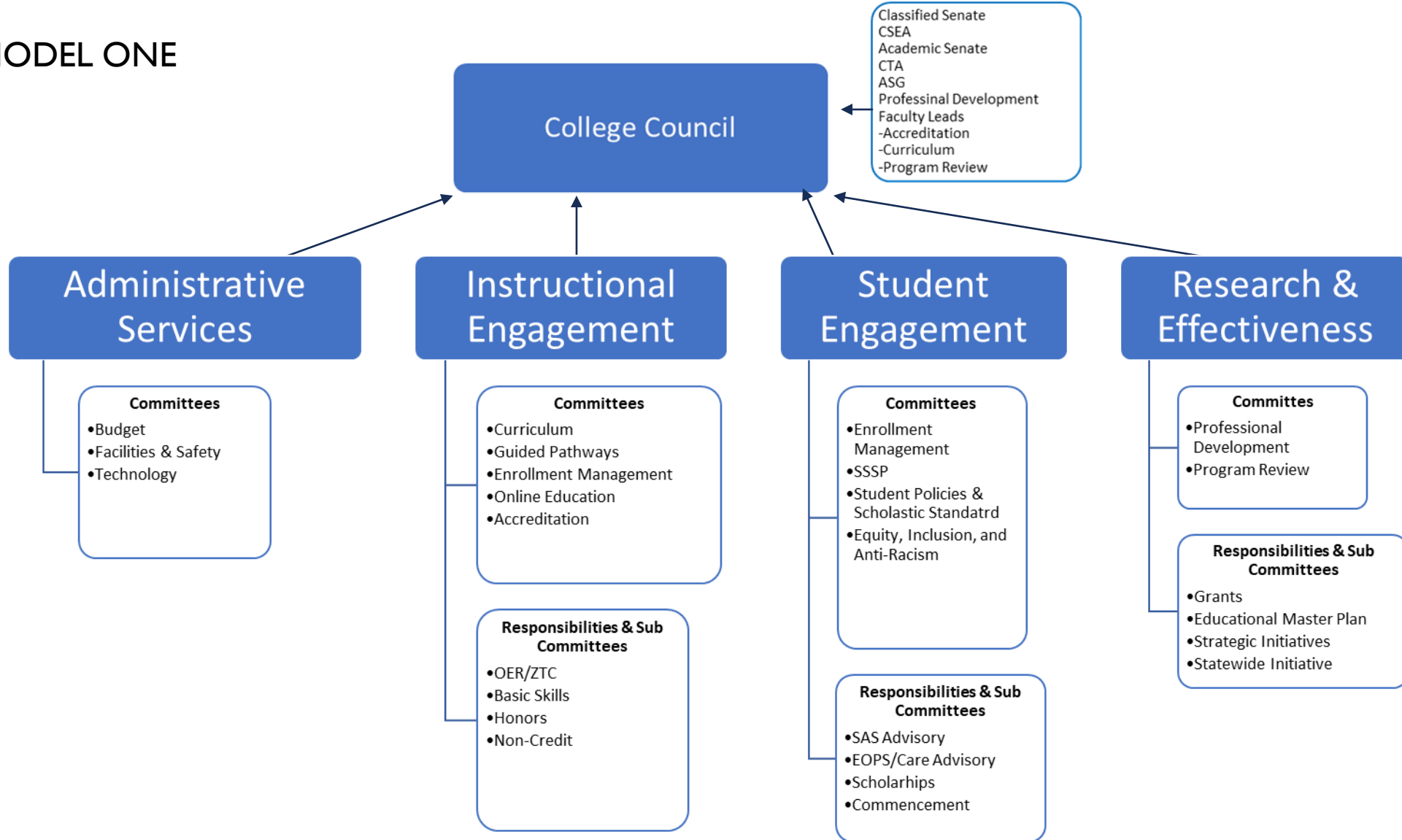
Fun Stuff

- Working with District to better align District & Campus meetings
- Dedicated time period for Division/Department Meetings
- Campus Leadership will no longer be scheduled to simultaneously attend 2-4 meetings
- Passing time and driving time between meetings

CURRENT COMMITTEE MEETING PATTERN

| | Monday | | | | | | Tuesday | | | | Wednesday | | | | Thursday | | | | Friday | | | | |
|-------|-------------------|-------------------------|---------------------|---------------------------|------------|--------------------|----------------------------------|----------------------|-------------|--|-----------|---------------------------|----------------------|--------------|----------|--|----------------------------|-------------------|----------------|----------------|------------------|--------------------------|------------------------|
| 9:00 | | | | | | | President's Cabinet | | | | | D-FAC 2nd | Chancellor's Cabinet | | | | President's Cabinet | | | | | Program Review 1st & 3rd | Policies/School Weekly |
| 9:30 | | | | | | | | | | | | | | | | | | | | | | | |
| 10:00 | | | | | | | | | | | | | | | | | VPI Managers 2nd, 3rd, 4th | Joint Manager 1st | SS Council 4th | SS Manager 2nd | D-IEAC 4th (VPs) | | |
| 10:30 | | | | | | | | | | | | | | | | | | | | | | | |
| 11:00 | | | | | | | | | | | | Budget 3rd | | | | | | | | | | | |
| 11:30 | | | | | | | | | | | | | | | | | | | | | | | |
| 12:00 | | | | | | | | | | | | | | | | | | | | | | | |
| 12:30 | | | | | | | | | | | | | | | | | | | | | | | |
| 1:00 | Curriculum Weekly | Honors 2nd | | | | | Accreditation Outcomes 1st & 3rd | Enroll Mgt 2nd & 4th | | | | | Technology 1st & 3rd | Arts & L 1st | | | | | | | | | |
| 1:30 | | | | | | | | | | | | College Council 2nd & 4th | | | | | | | | | | | |
| 2:00 | | | Prof. Dev 1st & 3rd | D-Enroll Manage 2nd (VPs) | | | | | | | | | | | | | | DBC 3rd | | | | | |
| 2:30 | | | | | | | | | | | | | | | | | | | | | | | |
| 3:00 | | Facilities & Safeth 1st | SSSP 1st & 3rd | | D-PPAC 2nd | Chanc Ad 1st & 3rd | Basic Skills 2nd & 4th | GP 2nd & 4th | HR-DIEC 2nd | | | Academic Senate Weekly | | | | | | | | | | Online 3rd | |
| 3:30 | | | | | | | | | | | | | | | | | | | | | | | |
| 4:00 | | | | | | | | | | | | | | | | | | | | | | | |
| 4:30 | | | | | | | | | | | | | | | | | | | | | | | |
| 5:00 | | | | | | | | | | | | | | | | | | | | | | | |
| | VPI | VPSS | VPAS | Dean-RP | Governance | District | | | | | | | | | | | | | | | | | |

MODEL ONE



| Shared Governance Draft: Reporting Model One | Membership | |
|--|---|--|
| College Council | President CTA Representative CSEA Representative Classified Senate Representative Academic Senate President (co-chair) Budget & Facilities Chair(s) | Institutional Effectiveness Chair(s) Instructional Efficacy Chair(s) Student Success Chair(s) Enrollment Management Chair(s) Faculty Leads: Accreditation, Curriculum, Program Review Student Government Representative |
| Budget & Facilities | Vice President of Administrative Services Budget Committee Chair(s) Facilities & Safety Committee Chair(s) Technology Committee Chair(s) | CSEA Representative Program Review Representative Student Government Representative Affinity Groups Representatives Interested Faculty, Staff, Administration and Students |
| Research & Effectiveness | Dean of Institutional Research, Planning, and Effectiveness Program Review Faculty Lead Outcomes Faculty Lead Professional Development | CSEA Representative Classified Senate Representative Student Government Representative Affinity Groups Representatives Interested Faculty, Staff, Administration and Students |
| Instructional Engagement | Vice President of Instruction Accreditation Faculty Lead Curriculum Faculty Lead Academic Senate President Distance Education Chair CSEA Representative | Guided Pathways Chair Affinity Groups Representatives Classified Senate Representative Student Government Representative Interested Faculty, Staff, Administration and Students |
| Student Engagement | Vice President of Student Services Academic Senate Vice President Equity, Inclusion, and Anti-Racism Chair(s) (New Committee) Enrollment management Chair(s) Matriculation/SSSP Leads | CSEA Representative Classified Senate Representative Student Government Representative Interested Faculty, Staff, Administration and Students Student Government Representative |

